

# Sanitary Vent HV160

## Application

The HV160 vent from J.A. Plast is developed specifically to provide high capacity with insignificant loss of pressure. This makes it ideal for kitchen ventilators and heat recovery systems in particular.

A 300 mm long spiro pipe, fixed from factory, ensures that the vent is always long enough to reach through the underlay regardless of roofing profile. The spiro pipe is insulated to avoid condensation.

*Please refer to national standards.*

- For pitched roofs 15 - 45°
- 20,000 mm<sup>2</sup> ventilation areal
- Can be manufactured for any profile

## Design

The HV160 vent is supplied installed on a base plate shaped to fit the roof profile 100%. Easily installed with the rest of the roofing material and always following the roof pitch, the vent presents a nicely integrated solution.

## Colour and Surface

Special coloured, glossy or structured with sand or granules the vents can be supplied with a 100% colour and surface match individually adjusted to each roofing material.

## Materials

Vent is manufactured from HIPS (High Impact Polystyrene).

Spiro pipe is manufactured from steel insulated with EPS (Expanded Polystyrene).

Felt Sleeve is manufactured from HIPS (High Impact PolyStyrene).

## Handling

Keep in original packaging during transport.

Do not wrap and expose to heavy load during transport.

Remove plastic bag before placing in sunlight.

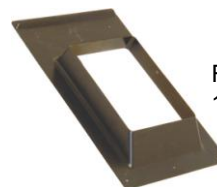


## Accessories

300 mm insulated spiro pipe



Felt Penetration Sleeve  
150x150 mm



*Roofing accessories supplied from J.A. Plast match roof profile, colour and surface 100%. The current product list and further information can be found on our homepage, [www.japlast.com](http://www.japlast.com).*